

---

# ENAMELLED COPPER WIRES

---

## CONTENTS

PAGE

---

PRODUCTS PROPERTIES AND APPLICATIONS

**202**

DIMENSIONS OF ENAMELLED COPPER WIRE

**203**

DIMENSIONS OF BOBBINS AND STANDARD NET WEIGHT

**204**



**PRODUCTS PROPERTIES AND APPLICATIONS :**

TYPE	TRADE NAME	REFERENCE STANDARDS	ENAMEL		THERMAL CLASS IEC 317	TYPICAL APPLICATION	SPECIAL PROPERTIES	LUBRICATING
			BASE COAT	TOP				
UEW 130	POLYURETHANE WIRE	IEC317.4 TIS 174 - 2525 JIS C3202	POLYURETHANE		(B) 130°C	FDD,HDD,TOY,A.V.Apparatus Electric transformer TV&Display Flyback Trans,Relay coil, Timer coil High frequency coil	Solderability Adherence Benzol resistance Alcohol resistance	Lubricating oil Nylon coat
PEW 155	POLYESTER WIRE	IEC 317.3 TIS 226 - 2525 JIS C3202	MODIFIED POLYESTER		(F) 155°C	fan motors, household motors automobile motors & generators	Adherence Acid resistance	Lubricating oil Nylon coat



**DIMENSIONS OF ENAMELLED COPPER WIRE**

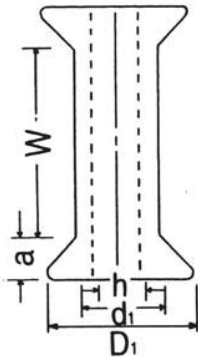
CONDUCTOR		CLASS 0		CLASS 1		CLASS 2		CONDUCTOR
DIAMETER	TOLERANCE	MIN.FILM THICKNESS	MAX.OVERALL DIAMETER	MIN.FILM THICKNESS	MAX.OVERALL DIAMETER	MIN.FILM THICKNESS	MAX.OVERALL DIAMETER	MAX. RESISTANCE
mm.	± mm.	mm.	mm.	mm.	mm.	mm.	mm.	AT 20°c Ω/km.
0.55	0.020	0.025	0.646	0.017	0.620	0.012	0.592	74.18
0.50	0.010	0.025	0.586	0.017	0.560	0.012	0.542	89.95
0.45	0.010	0.024	0.532	0.016	0.508	0.011	0.490	112.10
0.40	0.010	0.023	0.480	0.015	0.456	0.011	0.439	141.70
0.37	0.010	0.022	0.446	0.014	0.424	0.010	0.407	165.90
0.35	0.010	0.021	0.424	0.014	0.402	0.010	0.387	185.70
0.32	0.010	0.021	0.394	0.014	0.372	0.010	0.357	222.80
0.30	0.010	0.021	0.374	0.014	0.352	0.010	0.337	254.00
0.29	0.010	0.020	0.360	0.013	0.340	0.009	0.324	273.90
0.28	0.010	0.020	0.350	0.013	0.330	0.009	0.314	294.10
0.27	0.010	0.020	0.340	0.013	0.320	0.009	0.304	316.60
0.26	0.010	0.020	0.330	0.013	0.310	0.009	0.294	341.80
0.25	0.008	0.020	0.318	0.013	0.298	0.009	0.284	370.20
0.24	0.008	0.020	0.308	0.013	0.288	0.009	0.274	402.20
0.23	0.008	0.020	0.298	0.013	0.278	0.009	0.264	438.60
0.22	0.008	0.019	0.286	0.012	0.266	0.008	0.252	480.10
0.21	0.008	0.019	0.276	0.012	0.256	0.008	0.241	522.80
0.20	0.008	0.019	0.266	0.012	0.246	0.008	0.231	577.20
0.19	0.008	0.019	0.256	0.012	0.236	0.008	0.221	640.60
0.18	0.008	0.019	0.246	0.012	0.226	0.008	0.211	715.00
0.17	0.008	0.018	0.232	0.011	0.214	0.007	0.199	787.10
0.16	0.008	0.018	0.222	0.011	0.204	0.007	0.189	890.60
0.15	0.008	0.017	0.210	0.010	0.192	0.006	0.177	1016.00

**DIMENSIONS OF BOBBINS AND STANDARD NET WEIGHT FOR ENAMELLED COPPER WIRE**

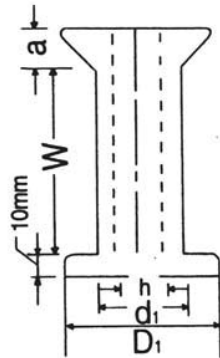
Spool No.	Flange Diameter (mm)		Barrel Diameter (mm)		Inside Width (mm) W	Flange Thickness (mm) a	Bore Diameter (mm) h	Spool Net Weight g	Standard Net Weight kg
	D1	D2	d1	d2					
PL-1	80 ± 0.5	-	50 ± 0.3	-	100 ± 0.3	10 ± 0.2	20 ± $\begin{smallmatrix} 0.5 \\ 0 \end{smallmatrix}$	80 ± 2	1.0
PL-2	100 ± 0.5	-	65 ± 0.5	-	125 ± 0.3	10 ± 0.2	20 ± $\begin{smallmatrix} 0.5 \\ 0 \end{smallmatrix}$	160 ± 3	2.0
PL-3	120 ± 0.5	-	76 ± 0.5	-	130 ± 0.4	10 ± 0.2	20 ± $\begin{smallmatrix} 0.5 \\ 0 \end{smallmatrix}$	220 ± 3	3.0
PL-4	125 ± 0.5	-	80 ± 0.5	-	160 ± 0.4	15 ± 0.2	25 ± $\begin{smallmatrix} 0.5 \\ 0 \end{smallmatrix}$	240 ± 5	4.0
PL-4S	135 ± 0.5	-	80 ± 0.5	-	110 ± 0.4	32.5 ± 0.5	20 ± 0.5	314 ± 5	4.0
PL-8	160 ± 0.5	-	100 ± 0.5	-	200 ±	15 ± 0.2	30 ± $\begin{smallmatrix} 0.5 \\ 0 \end{smallmatrix}$	555 ± 5	8.0
PL-1S	80 ± 0.5	-	50 ± 0.3	-	92 ± 1.5	28 ± 1.5	20 ± $\begin{smallmatrix} 0.3 \\ 0 \end{smallmatrix}$	80 ± 2	1.0
PL-400S	76 ± 0.1	-	60 ± 0.1	-	68 ± 0.1	12 ± 0.1	16 ± 0.1	98 ± 0.5	0.4
PL-600S	88 ± 0.1	-	68 ± 0.1	-	79 ± 0.1	14 ± 0.1	16 ± 0.1	136 ± 0.5	0.6
PT-1	105 ± 0.5	95 ± 0.5	58 ± 0.3	53 ± 0.3	100 ± 0.3	10 ± 0.2	20 ± $\begin{smallmatrix} 0.5 \\ 0 \end{smallmatrix}$	140 ± 3	1.5
PT-2	115 ± 0.5	105 ± 0.5	67 ± 0.3	60 ± 0.3	150 ± 0.3	10 ± 0.2	20 ± $\begin{smallmatrix} 0.5 \\ 0 \end{smallmatrix}$	170 ± 3	2.5
PT-4	140 ± 0.5	124 ± 0.5	86 ± 0.5	74 ± 0.5	170 ± 0.4	15 ± 0.2	26 ± $\begin{smallmatrix} 0.5 \\ 0 \end{smallmatrix}$	340 ± 5	4.0
PT-10	180 ± 0.5	160 ± 0.5	110 ± 0.5	96 ± 0.5	200 ± 0.4	15 ± 0.2	26 ± $\begin{smallmatrix} 0.5 \\ 0 \end{smallmatrix}$	620 ± 5	10.0
PT-15	200 ± 0.5	180 ± 0.5	110 ± 0.5	96 ± 0.5	200 ± 0.4	15 ± 0.2	30 ± $\begin{smallmatrix} 0.5 \\ 0 \end{smallmatrix}$	740 ± 10	15.0
PT-25	230 ± 0.5	215 ± 0.5	130 ± 0.5	110 ± 0.5	250 ± 0.4	15 ± 0.2	30 ± $\begin{smallmatrix} 0.5 \\ 0 \end{smallmatrix}$	1000 ± 15	25.0
PT-60	300 ± 0.8	270 ± 0.8	180 ± 0.8	150 ± 0.8	350 ± 1.0	25 ± 0.3	45 ± $\begin{smallmatrix} 0.5 \\ 0 \end{smallmatrix}$	2400 ± 30	60.0
PT-90	315 ± 1.0	300 ± 1.0	200 ± 1.0	180 ± 1.0	425 ± 1.5	38 ± 1.0	100 ± $\begin{smallmatrix} 1.0 \\ 0 \end{smallmatrix}$	3900 ± 30	90.0

**B  
O  
B  
B  
I  
N**

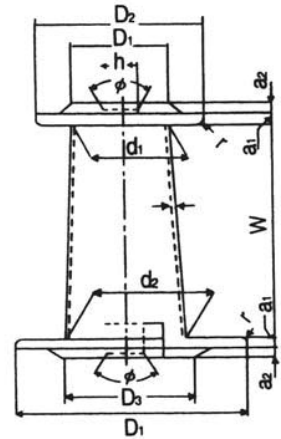
PL-400S  
PL-600S  
PL-4S



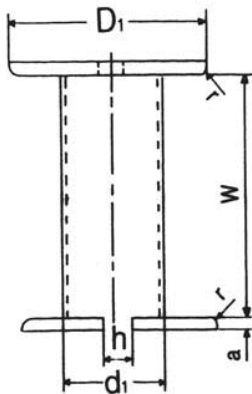
PL-1S



PT-90



PL-1  
PL-2  
PL-3  
PL-4  
PL-8



PT-1  
PT-2  
PT-4  
PT-10  
PT-15  
PT-25  
PT-60

